



RCD OVERVIEW

1300 SERIES				
Model Number	1300	1300-HYDG	1300-HGI	1300-9G
Head Bore	8-1/4"	8-1/4"	8-1/4"	9-1/8"
Pressure Rating (Static/Dynamic)	1000/500	1000/500	2000/1500	1000/500
RPM (max)	200	200	200	200
Lubricated	✓	na	na	na
Sealed	na	✓	✓	✓
Manual Clamp	✓	na	na	✓
Hydraulic Clamp	na	✓	✓	na
1024 Thread On Element*	✓	✓	✓	na
1510 Thread On Element*	na	na	na	✓

* Available in Natural Rubber or Urethane both with various bore sizes



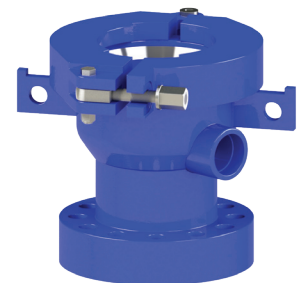
1400 SERIES			
Model Number	1400	1400-HYDG	1400-HGI
Head Bore	8-1/4"	8-1/4"	8-1/4"
Pressure Rating (Static/Dynamic)	1000/500	1000/500	2000/1500
RPM (max)	200	200	200
Lubricated	✓	na	na
Sealed	na	✓	✓
Manual Clamp	✓	na	na
Hydraulic Clamp	na	✓	✓
4010 Bolt On Element*	✓	✓	✓
Adapter for 1024 Thread on Element	Optional	Optional	Optional
Kelly Drive	Optional	Optional	Optional

* Available in Natural Rubber or Urethane both with various bore sizes



1360 STRIPPER-TUBING HEAD (NON ROTATING)	
Model Number	1360
Bore (Pass Thru)	7" to 10-3/4"
Pressure Rating (Static)	3500
RPM (max)	200
Manual Clamp	✓
9010 Element* (TUBING SIZE)	1-1/2" TO 5-1/2"

* Available in Natural Rubber or Urethane both with various bore sizes



Washington Rotating Control Heads, Inc.
 P: 724.228.8889 | F: 724.228.8912
 63 Springfield Avenue
 Washington, PA 15301
www.washingtonrotating.com

Our test pressures have been established through controlled test procedures. As a result of the ever-changing environment of well drilling operations along with wear and tear on equipment, which erodes longevity and safe operating parameters, Washington Rotating Control Heads, Inc., its Business Units, Agents and Affiliates make no warranty either expressed or implied on the test pressures contained herein. Washington Rotating Control Heads, Inc. does not under any circumstances recommend that its rotating control devices be used as primary blow out prevention equipment.

API Specification Q1 - Registration No. Q1-2651

ISO 9001:2015-APIQR Registration No. 2775